

Rowe Referrals

The Veterinary Hospital

Bradley House, Ferndene

Bristol, BS32 9DT

Telephone 01454 521000

Fax 01454 521001

referrals@rowevetgroup.com

www.rowereferrals.co.uk

The Eye Clinic

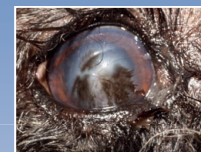
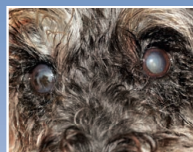
eyeclinic@rowevetgroup.com

eyes@rowevetgroup.com

Rowe

Referrals

Dry Eye/ Keratoconjunctivitis sicca



www.facebook.com/roweeyeclinic

www.facebook.com/roweveterinaryreferrals



Dry Eye/Keratoconjunctivitis sicca

What is Keratoconjunctivitis sicca?



Keratoconjunctivitis sicca is the term used for insufficient tear production.

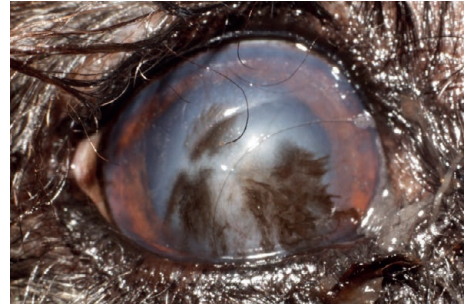
Why does it matter, if my pet has insufficient tear production?

The tear film has several very important functions, such as providing the surface of the eye with oxygen and nutrients, lubricating the surface of the eye and fighting infection on the surface of the eye. If the tear film is lacking, your pet will be predisposed to the development of diseases of the surface of the eye (cornea), not to mention the discomfort it causes.

What causes this disease?

There are several causes of dry eye disease, including problems with the glands producing the tear film, hormonal imbalances, reactions to certain drugs, and immune

mediated causes (abnormal behaviour of the body's own defence mechanisms).



Can both eyes be affected?

Yes, we commonly see this disease as a bilateral condition.

Are any breeds predisposed?

Yes, we commonly see dry eye disease in Cavalier King Charles Spaniels, English Bulldogs, Lhasa Apsos, Shih Tzus, West Highland White Terriers and Pugs, amongst others.

What treatment options do I have?

Most cases respond well to medical treatment, which is usually a combination of tear stimulating and tear replacement medications. In some cases anti-inflammatory and antibiotic drugs are required. Most cases require life-long treatment to some degree. Cases which don't respond to medical treatment may require surgery which provide constant lubrication to the surface of the eye. Surgery includes redirecting saliva from the mouth to the lower eyelid. Although saliva does not have the same quality as tear film, it does provide instant moisture to the surface of the eye, relieving signs of discomfort.

What happens if I do nothing?

If left untreated, dry eye will cause constant discomfort and ultimately result in corneal ulcers, which may result in loss of vision or loss of the eye. Humans suffering with dry eye disease report severe discomfort, so we can only assume your pet feels the same.

If you have any further questions regarding this or any other condition feel free to contact us.